

2015 Mitsubishi Triton GLX-R D/CAB AUTO



Finance this car

From

\$107.88*

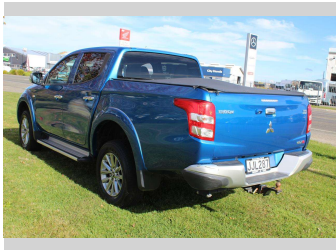
per week



Adopt-A-Car

MARAC  

*Finance calculation based on a 48 month term, 10% deposit and with an example annual fixed interest rate of 12.95%. Actual interest rate may be higher or lower. Includes an establishment fee of \$350.00. Full term total amount payable of \$24,337.35. Estimate only, not an offer of finance. Terms, conditions and lending criteria apply.



Purchase Price

\$18,990

Includes GST, Registration & Licensing


Indicative repayments

\$107.88 per week*

Based on a 48 month term & 10% deposit.
Total repayments (208) = \$24,337.35

MARAC

Gain peace of mind with
Mechanical Breakdown
Insurance. **Ask us how.**


an ASSURANT company

Top features

» 5 Seater

» ABS Braking

» Air Conditioning

» Alloy Wheels

» Bluetooth

» CD Player

» Central Locking

» Cruise Control

» Electric Windows

» Front, Side and Curtai...

» NZ New

» Power Steering

» Reversing Camera

» Running Boards

» Tonneau Cover

» TOW BAR

» Traction Control

» Turbo Diesel

Body Style

4 door, Ute

Odometer

191,200 km

Engine

2440 cc

Fuel Type

Diesel

Transmission

Auto, 2WD

Wheels

17"


VIN

MMAJYKK10GH008619

Interior

Charcoal

Safety


Based on 2023 UCSR rating
for 15-21 models

Reg No.

JJL287

Ext Colour

Blue

History

NZ New

Seats

5 seats, Cloth

CO2 Emissions

★★★☆☆☆

225 grams/km

Energy Economy

★★☆☆☆☆


Annual fuel cost of \$3,470
8.6L per 100km

Cost per year is an estimate based
on diesel price of \$2.00 per litre and
an average distance of 14000 km.
Includes Road User Charges (RUC).
Emissions and Energy Economy
figures standardised to 3P WLTP.

Stock ID: 5326

Adopt-A-Car

Adopt A Car | Phone 0272887933 | Email sales@adoptacar.co.nz
989b Kairanga Bunnythorpe Road, Kairanga, Palmerston North 4475, New Zealand
www.adoptacar.co.nz



★★★★★
4.66 | 314 reviews

* Adopt A Car is not a lender nor a financial adviser. Any amounts displayed should not be seen as an offer of finance or taken as financial advice. The interest rate, fees and loan term used in this calculation may not actually represent those available from lenders. Actual interest rates, fees and loan terms will vary per lender and are typically based on an assessment of your credit risk and responsible lending criteria. Any repayment amounts displayed are indicative only and have been calculated using several other indicative inputs. The interest rate used in this calculation is an arbitrary 12.95%, however exact interest rates vary per lender. The term of the loan used in this calculation is 48 months. Exact terms available vary per lender although options typically include 6, 12, 18, 24, 36, 48 and 60 months. This calculation also includes a typical mandatory fee charged by lenders. This is a one-off establishment fee of \$350.00. Typically, this fee can be paid upfront or, as in this calculation, be capitalised over the contract term, ie. included in the loan amount. This fee can vary per lender and other non-mandatory fees and charges may also apply. The total amount of repayments has been calculated by multiplying 208 weekly repayments (based on a 48 month term) by the weekly repayment amount of \$107.88 which equals \$24,337.35. This calculator does not consider any of your own personal circumstances and we strongly suggest you seek budgeting advice prior to committing to any loan contract. Responsible lending criteria and lender terms and conditions will likely apply to any finalised loan contract. Proof of security and/or vehicle insurance may also be required before proceeding.